



AQUAPROOF CEMENT PRIMER™ **CLASSIC** (Interior Cement Primer)

Aquaproof Cement Primer Classic is an acrylic co-polymer based material which after drying fortifies & seals the surface with its high bonding & adhesive properties. It is water thinnable. Applied on all the interior plaster surfaces irrespective of old or new. It does not require any type of curing or other coat like cement wash.

WHERE TO USE: It can be applied for all the interior plaster surfaces irrespective of old or new. It does not require any type of curing or other coat like cement wash.

HOW TO USE:

(A) SURFACE PREPARATION: Ensure that the surface is structurally sound and free from dust, loose & poorly bonded materials. Remove all the traces or patches of oil, grease by washing. Any fault or damage in the structure which may cause moisture, dampness, water penetration should be repaired before using Aquaproof Cement Primer Classic.

(B) DILUTION: Dilute Aquaproof Cement Primer Classic in up to 50% of clean potable water and apply diluted primer with a brush or roller. Let it dry for 4-6 hours before application of paint.

ADVANTAGES:

- Highly water resistant.
- Increases life of paint.
- Increases coverage of paint, hence it makes it economical to use.
- Reduces efflorescence on the surface.
- Better adhesion to the substrates.

COAT COVERAGE: 100-110 sq.ft. is covered per litre/coat

STORAGE: Store in normal & dry condition with tightly closed container.

PRECAUTION: Before painting new plastered surface must be allowed to matured. Aquaproof Cement Primer Classic do not over thin. Stir the primer well before use. On dusty porous surfaces apply additional coat of Aquaproof Cement Primer Classic for better adhesion.

SHELF LIFE:	PACKAGING:
2 years from date of manufacture in tightly closed container away from direct sunlight and excessive heat.	Aquaproof Cement Primer Classic is available in 1, 4, 10 & 20Ltr attractive plastic container. Standard carton packing: 1Ltr: 12 cans per carton. 4Ltr: 45 cans per carton. 10Ltr: Single bucket. 20Ltr: Single bucket.

**Corporate Office:**

601, Corporate Arena, Off. Aarey Piralal Cross Rd., Goregaon (W), Mumbai - 400104
Tel: 022-46038393 Email: info@aquaproofindia.com | Website: www.aquaproofindia.com



AQUAPROOF CEMENT PRIMER™ PREMIUM (Exterior Primer)

Aquaproof Cement Primer Premium is an acrylic co-polymer based superior primer for exterior. Aquaproof Cement Primer Premium with high grip & bonding capacity is a perfect primer to form a tougher yet flexible film, which adheres wonderfully to the surface applied. It is highly recommended for all kinds of emulsion paints. Use Aquaproof Cement Primer Premium for priming before painting.

WHERE TO USE: It can be applied for priming on all types of exterior cement walls (RCC, asbestos sheet, concrete brick etc.) It does not require any type of curing or other coat like cement wash.

HOW TO USE:

(A) SURFACE PREPARATION: Ensure that the surface is structurally sound and free from dust, loose & poorly bonded materials. Any fault or damage in the structure which may cause moisture, dampness, water penetration should be repaired.

(B) DILUTION: Dilute Aquaproof Cement Primer Premium in up to 50% of clean potable water and apply diluted primer with a brush or roller. Let it dry for 4-6 hours before application of paint.

ADVANTAGES:

- No curing required.
- Forming a seal coat which is non-absorbent.
- Enhanced, better finish.
- Possible to increase coverage of paint.
- It creates toughness for walls.
- It is flexible.
- It is economical.
- It gives good support to paint which protects it from sun & heavy rain.

COAT COVERAGE: 90-95 sq.ft. is covered per litre/coat

PRECAUTION: Do not over thin or over extend the brush. Stir the primer well and strain before use. Do not apply when ambient temperature is less than 10°C. To remove persistent fungus/algae deposits (seen as black patches), apply 1:10 (1Ltr biowash & 10Ltr water) diluted solution on areas with brush. After 1 hour, clean the biowash applied surface with water and light brushing with coir brush. On dusty porous surfaces apply additional coat of primer for better adhesion. It is not recommended to apply putty coat over the priming coat.

SHELF LIFE:

2 years from date of manufacture in tightly closed container away from direct sunlight and excessive heat.

PACKAGING:

Aquaproof Cement Primer Premium is available in 1, 4, 10 & 20Ltr attractive plastic container.

Standard Carton packing:

1Ltr: 12 cans per carton.

4Ltr: 4 cans per carton.

10Ltr: Single bucket.

20Ltr: Single bucket.

**Corporate Office:**

601, Corporate Arena, Off. Aarey Piralal Cross Rd., Goregaon (W), Mumbai - 400104
Tel: 022-46038393 Email: info@aquaproofindia.com | Website: www.aquaproofindia.com



INNOVA ACE™

(Exterior Emulsion)

Aquaproof Innova Ace exterior emulsion paint is a high anti fungal, acrylic emulsion smooth exterior paint which offers an economical decorative finish. It gives bright colour finish, is resistant to fungus/algae, colour fading, peeling & cracking in conditions of rain, heat and humidity.

WHERE TO USE: Innova Ace can be used on most exterior and interior surfaces.

HOW TO USE:

(A) SURFACE PREPARATION: Make the surface clean and free from loose or poorly bonded materials and any growth of moss, algae or fungus by vigorous wire brushing. Wash the surface clean with water. Any damage in wall, cracks or voids which may cause water penetration should be repaired before application.

(B) DILUTION: Stir Innova Ace well inside the container. Mix 2 parts of Innova Ace with 1 part of potable water and stir well to form a consistent solution for painting.

(C) APPLICATION: Apply 2 coats of Innova Ace by brush or roller. A time gap of 4-6 hours is required between coats. Horizontal surfaces like parapets and sun shades should be painted with an additional coat for ideal protection. Coverage area is approximately 60-70 sq.ft. /per liter for a two coat finish depending on surface conditions & method of application.

COAT COVERAGE: 60-70 sq.ft. is covered per litre per 2 coats.

ADVANTAGES:

- **Protection & durability:** It provides excellent protection to the painted surface. Such high protection ensures durability of surface painted with Innova Ace.
- **Resists chalking & blistering:** It offers excellent resistance to chalking, cracking and weathering in comparison to cement paint.
- **High bonding & superior grip:** It provides high bonding and a superior grip. Adhesion to a variety of substrates/surfaces is a speciality of Innova Ace.
- **Weatherability:** The strong bonding and grip coupled with waterproof property of Innova

Ace makes it withstand harsh climatic conditions.

- Anti-fungal & anti-algal: It contains special additives like fungicides, which make the paint coat resist fungus and algal growth.

SHADES: White base only.

STORAGE: Store in normal & dry condition with tightly closed containers.

PRECAUTION: Ensure that the mixing of the paint is in the recommended proportion. Stir well before using the paint. Do not over thin. It may cause shade variation, low hiding, poor bonding & flaking. Curing is not required for Innova Ace painted surface.

SHELF LIFE:	PACKAGING:
2 years from date of manufacture in tightly closed container away from direct sunlight and excessive heat.	1,4,10 & 20Ltr plastic container.

TECHNICAL SPECIFICATIONS:

PROPERTIES	RESULT
Nature of paint	Thixotropic free-flowing liquid
Mode of application	By brush or roller
Mixing Ratio	Mix 2 parts of Innova Ace with 1 part of potable water
Finish	Smooth finish
Drying time	Touch dry 25-30 min.
Recoating period	4-6 hours
Coverage	5.5-6.5 sq.m. / lit. for 2 coats

Corporate Office:

601, Corporate Arena, Off. Aarey Piralal Cross Rd., Goregaon (W), Mumbai - 400104
 Tel: 022-46038393 Email: info@aquaproofindia.com | Website: www.aquaproofindia.com



FORAVER™ (Premium Exterior Emulsion)

Foraver is a water based, modified acrylic emulsion paint for exterior walls. It is an ideal paint for all those structures which you want to protect & beautify. Foraver painted walls have a smooth and soft-feel like finish. It can resist colour fading which maintains the aesthetic quality of the painted wall. Foraver provides excellent resistance against the growth of algae and fungi on the wall.

WHERE TO USE: Foraver exterior emulsion is an exterior wall finish that can be applied on various types of exterior surfaces like cement plasters, concrete, asbestos sheets etc. It should not be applied on surfaces/substrates that are subjected to continuous seepage or dampness.

HOW TO USE:

(A) SURFACE PREPARATION: Ensure that the surface to be painted is free from any loose paint, dust or grease. Any previous growth of fungus algae or moss needs to be removed thoroughly by vigorous wire brushing and cleaning with water. Surface imperfection such as holes, dents, fine cracks have to be repaired before application of Foraver exterior emulsion paint. Freshly plastered surfaces must be allowed to cure completely.

(B) DILUTION: Stir Foraver well inside the container. Dilute 1 liter of paint with maximum 400ml of potable water. (Ref. scale- 20 liter paint : maximum 8 liter water) Stir well to form a consistent solution for painting. Use brush or roller to apply on the surface. Drying time of 4-5 hours is recommended between the coats. Coverage area is approximate 60 to 80sq.ft. per liter for a two coat finish, depending on the surface conditions, porosity & method of application. Horizontal surfaces like awnings, parapets & sunshades should be painted with additional coat for ideal protection.

COAT COVERAGE: 60-80 sq.ft. is covered per litre per 2 coats.

ADVANTAGES:

- Foraver gives protection against high rainfall, humidity and heat.
- It is scratch and abrasion resistant.
- Foraver has high grip and bonding property.
- Foraver is alkali resistant and thus protects the surface from effloresce.
- It is algae and fungus resistant.

- It is resistant to chalking and blistering.
- For ever completely protects against UV degradation.

STORAGE: Store in normal & dry condition with tightly closed container.

PRECAUTION: Ensure that the mixing of the paint is in the recommended proportion. Stir well before using the paint. Do not over thin as it may cause shade variation, low hiding, poor bonding & flaking. Curing is not required for Forever painted surface.

SHELF LIFE:	PACKAGING:
2 years from date of manufacture.	It is available in 1, 4, 10 & 20Ltr plastic container.



Corporate Office:

601, Corporate Arena, Off. Aarey Piralal Cross Rd., Goregaon (W), Mumbai - 400104
Tel: 022-46038393 Email: info@aquaproofindia.com | Website: www.aquaproofindia.com



HALLMARK™

(Interior/Exterior Emulsion)

Aquaproof Hallmark interior & exterior emulsion is an acrylic emulsion paint that offers excellent smoothness to touch and elegant, rich finish for interior wall surfaces.

WHERE TO USE: Aquaproof Hallmark emulsion is an interior & exterior wall finish that can be applied on all types of smooth plasters, false ceiling, asbestos sheets, concrete etc.

HOW TO USE:

(A) SURFACE PREPARATION: All surfaces to be painted should be clean, dry and free from loose and flaking material. Prime bare surfaces with the Aquaproof Primer. Rub down previously painted surfaces vigorously & rinse thoroughly.

(B) METHOD OF APPLICATION: Stir well before use. Dilute Aquaproof **Hallmark** Emulsion with 40-50% of clean potable water and apply 2 coats on prepared masonry surfaces by brush or roller.

ADVANTAGES:

- It is very durable.
- It is very economical.
- It provides the finish and durability of emulsion at a low price.
- It produces a washable surface.
- It is resistant to fading and yellowing.

COAT COVERAGE: Approx 90-100 sq.ft. is covered per litre per 2 coats depending upon the nature and porosity of the surface.

SHADES: White base only.

STORAGE: Store in a normal & dry condition with tightly closed container.

PRECAUTIONS: Stir well before use. Ensure good ventilation during application and drying. Avoid contact with skin & eyes. In case of contact with eyes, rinse immediately with plenty of water and seek medical advice. Use protective equipment like rubber/polythene gloves, safety goggles, face mask while handling the paint. This is required for all paints. Tinted paints need thorough mixing immediately after tinter addition as well as before use.

SHELF LIFE:	PACKAGING:
2 years from date of manufacture.	It is available in 1, 4, 10 & 20Ltr plastic container.

**Corporate Office:**

601, Corporate Arena, Off. Aarey Piramal Cross Rd., Goregaon (W), Mumbai - 400104
Tel: 022-46038393 Email: info@aquaproofindia.com | Website: www.aquaproofindia.com



ELLEGANZA™ (Premium Interior Emulsion)

Elleganza luxury emulsion is a premium quality water based, 100% acrylic interior wall finish. It provides a smooth and excellent finish with higher sheen.

WHERE TO USE: Elleganza is an interior wall finish that can be applied on all types of smooth plaster, false ceilings, asbestos sheets, concrete etc.

HOW TO USE:

(A) SURFACE PREPARATION: All surfaces to be painted should be clean, dry and free from loose and flaking material. Prime bare surfaces with the appropriate Aquaproof primer. Rub down previously painted surfaces with fine waterproof abrasive paper and rinse thoroughly.

(B) METHOD OF APPLICATION: Stir well before use. Easy to apply by brush or roller. Also suitable for application by spray. Dilute Elleganza with 40% of clean water and apply two coats on prepared masonry surfaces by brush or roller.

ADVANTAGES:

- It has excellent flow and leveling on application.
- It provides smooth and excellent finish.
- It is stain resistant.
- It resists fungus and algae growth.
- It is suitable for use on interior walls and ceilings.
- It is easy to apply, washable and dirt resistant.

COAT COVERAGE: Approx 90-100 sq.ft. is covered per litre per 2 coats depending upon the nature and porosity of the surface.

STORAGE: Store in normal & dry condition with tightly closed container.

PRECAUTIONS: Stir well before use. Ensure good ventilation during application and drying. Avoid contact with skin & eyes. In case of contact with eyes, rinse immediately with plenty of water and seek medical advice. Use protective equipment like rubber/polythene gloves, safety goggles, face mask while handling the paint. This is required for all paints. Tinted paints need thorough mixing immediately after tinter addition as well as before use.

SHELF LIFE:	PACKAGING:
3 years from the date of manufacture.	It is available in 1, 4, 10 & 20Ltr plastic container.

**Corporate Office:**

601, Corporate Arena, Off. Aarey Piralal Cross Rd., Goregaon (W), Mumbai - 400104
Tel: 022-46038393 Email: info@aquaproofindia.com | Website: www.aquaproofindia.com



PRESTIGE™

(Premium Distemper)

Aquaproof Prestige distemper is water based acrylic co-polymer emulsion based premium distemper for interior walls only. It is best known for low cost, elegant, smooth, attractive and durable matt finish paint.

WHERE TO USE: Aquaproof Prestige distemper can be applied on all types of interior finishing walls (plasters, false ceiling, asbestos sheet, concrete etc.). It is designed for interiors.

HOW TO APPLY:

(A) SURFACE PREPARATION: Sand the surface with emery paper, make it dust and loose particle free and allow the surface to dry completely.

(B) DILUTION: Dilute Aquaproof Prestige distemper with potable water in the ratio of 1:0.60 and apply with brush or roller. Let it dry for 4-6 hours.

ADVANTAGES:

- It is durable.
- It gives smooth finishing to interior walls.
- It gives shade retention for a long time.
- Aquaproof Prestige distemper gives you a smooth paint finish in an economical price.
- It can be applied on all types of interior walls. (plaster, false ceiling, asbestos sheet, concrete etc.)
- It is washable.
- It is eco friendly.

COAT COVERAGE: Approx 80-100 sq.ft./kg for 2 coats on smooth masonry surface by brushing.

SHADE: Available in 18 shades and also can be coloured in any colour at colouring machine. It is compatible with any other leading brand of distemper.

STORAGE: Store in normal & dry condition with tightly closed container.

PRECAUTION: Stir well before using the paints. Add water slowly while mixing. Clean the surface before application. Use soft, drinking water/municipal water. Do not over thin.

SHELF LIFE:	PACKAGING:
2 years from date of manufacture in original tightly closed containers. Keep away from direct sunlight and excessive heat.	Available in 1, 5, 10 & 20kg cans & buckets.



Corporate Office:

601, Corporate Arena, Off. Aarey Piramal Cross Rd., Goregaon (W), Mumbai - 400104
Tel: 022-46038393 Email: info@aquaproofindia.com | Website: www.aquaproofindia.com



NAVARATAN™

(Acrylic Distemper In Pouch)

It is a water based acrylic co-polymer emulsion based distemper for interior walls only.

WHERE TO USE: Aquaproof Navratan distemper should be used only on interior surfaces. It can be applied on suitably prepared masonry walls.

HOW TO APPLY:

(A) SURFACE PREPARATION: Sand the surface with emery paper, make it dust and loose particle free and allow the surface fully dry.

(B) DILUTION: Aquaproof Navratan distemper dilute with potable water in the ratio of 1: 0.75 and apply diluted distemper with a brush. Let it dry for 4-6 hours.

ADVANTAGES:

- It is low cost distemper.
- It is elegant.
- Navratan distemper gives a durable matt finish.
- It is chalk resistance and does not come off like chuna.
- Navratan distemper gives you a excellent finish
- Navratan distemper gives you a smooth finish in an economical price.

COVERAGE: 60-70 sq.ft is covered per litre for 2 coats on smooth masonry surface by brushing.

STORAGE: Store in normal & dry condition with tightly closed container.

PRECAUTIONS: Stir well before use. Clean the surface before application.

SHELF LIFE:	PACKAGING:
1 year from the date of manufacture.	1kg pouch (120 packets in master carton).





रेंगार्ड™ (Acrylic Elastomeric Waterproof Coating)

Aquaproof रेंगार्ड is composed of high quality acrylic emulsion polymer, properly selected & graded fine fillers, many additives & water as a medium. It is used as a waterproofing & protective coating for exterior walls of the building because it forms higher film thickness, has excellent flexibility, breathing properties, water resistance, crack-bridging ability, weathering durability and an excellent resistance to the growth of micro-organisms.

WHERE TO USE: All types of exterior masonry surfaces, concrete, cement-sand renderings etc. Applicable on asbestos sheets also.

HOW TO USE:

(A) SURFACE PREPARATION: All new cement-sand renderings/concrete surfaces should be allowed to age for 6 to 8 weeks before surface coating. Surface must be cleaned of all laitance, loose material, oil, grease, etc. by methods such as wire brushing & shot blasting. All surface cracks up to 5mm width should be filled up with Aquaproof Krack-X or Aquaproof Krackfill.

(B) PRIMING: Prime the surface with Aquaproof's Aqua Sol and allow it to dry for 4 to 6 hours.

APPLICATION: Use रेंगार्ड directly from the container. Stir contents well before use. Dilute रेंगार्ड with 30% of water & then apply two coats of it at the interval of 4 to 6 hours at 30°C. For enhanced protection, apply additional coat of रेंगार्ड on rain lashing walls, chajjas and parapet walls. Allow the coated surface to air cure (natural cure) fully for 7 days.

ADVANTAGES:

- **Flexibility:** Highly flexible and covers hairline cracks up to 0.5 mm effectively so that there is no ingress of water.
- **Elasticity:** High elasticity easily withstands stress caused by thermal expansion & contraction (>100% elongation at 110-120 micron DFT)

- **UV resistance:** Resistance to UV(Sun light); hence coating has longer life.
- **Film thickness:** Higher film thickness provides resistance to the movements of structures, gives crack bridging ability & waterproofing properties.
- **Toughness:** Tough films withstand wind driven rain.
- **Microbial resistance:** Resistance to fungus and algae; hence maintains the aesthetic value.
- **Ease of application:** User friendly, easily applicable by brush, roller or spray.
- **Toxicity:** It is non-toxic.
- **Water resistance:** It is powerful & gives toughness against weathering effect.
- **Breathability:** It has property of breath ability.

COVERAGE: 35-40 sq.ft/kg in 2 coats

STORAGE: Store in a cool and dry place. Keep away from direct sunlight and heat.

PRECAUTIONS:

BEFORE USE: Recommended to be primed with Aquaproof's Aqua Sol only. Do not apply when ambient temperature is below 10° C. or above 45° C. Do not apply in direct sunlight or during rains. Adhesion property may get affected over poor quality putty and very smooth surfaces.

HEALTH & SAFETY PRECAUTIONS:

Skin Contact: Wash skin with soap & water. Remove contaminated clothes.

On Eye Contact: Immediately splash eyes with plenty of water. Consult Physician if irritation persists

SHELF LIFE:	PACKAGING:
Shelf life is 12 months from the date of manufacturing in unopened conditions.	1,4,10 & 20kg plastic container

Corporate Office:

601, Corporate Arena, Off. Aarey Piralal Cross Rd., Goregaon (W), Mumbai - 400104
Tel: 022-46038393 Email: info@aquaproofindia.com | Website: www.aquaproofindia.com



AQUA SOL™

(SBR based new age Waterproof Primer Coating)

Aqua Sol is a three in one unique product. It damp proofs the wall as it works like a damp proofer. It stabilizes the wall as a stabilizer and protects the wall as a protector.

WHERE TO USE: Aqua Sol can be used at interior or exterior walls of any surface for better glow, hair line crack fill. and hiding of wall back ground. It also helps to the extend waterproofing. It also used as primer of highest quality & used before Aquaproof jangard for waterproof coating.

HOW TO APPLY: Aqua Sol can applied by brush or roller after cleaning walls by broom & rinse by water.

ADVANTAGES:

- No patch, no crack on your walls.
- Aqua Sol gives your walls a new life.
- It's easy to apply as it is a 'do-it-yourself' product.
- It gives more coverage; hence it is economical.
- Aqua Sol is pH balanced and it gives waterproofing.
- It is revolutionary product for exterior and interior walls.
- It comes with a unique formula that protect the exterior and interior walls from cracks and patches.
- It saves cost of paint as it consumes less paint & gives more life to painted walls.
- It is water based; hence it is easy to use.
- It saves cost in overall painting expenses.

COAT COVERAGE: 75-80 sq.ft. is covered per litre per coat .

SHELF LIFE: 2 years from date of manufacture in original tightly closed containers. Keep away from direct sunlight and excessive heat.

STORAGE: Store in normal & dry condition with tightly closed container.

PRECAUTION: Stir well before use. Clean the surface before application.

SHELF LIFE:	PACKAGING:
2 years from date of manufacture in original tightly closed containers. Keep away from direct sunlight and excessive heat.	1,4,10 & 20kg plastic container



Corporate Office:

601, Corporate Arena, Off. Aarey Piralal Cross Rd., Goregaon (W), Mumbai - 400104
Tel: 022-46038393 Email: info@aquaproofindia.com | Website: www.aquaproofindia.com



AQUATEXTM

(Textured Wall Finish)

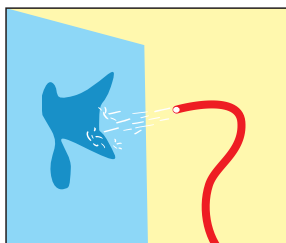
Aquaproof Aquatex is the modified acrylic resin base texture coating for exteriors in the paste form. Aquatex is suitable for full external application with long term weather protection and high durability.

Aquatex textured coating offers **three types of design**

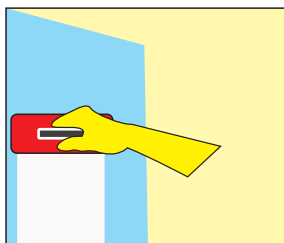
1. **Aquatex** Vertical
2. **Aquatex** Horizontal
3. **Aquatex** Semi-Circular

WHERE TO USE: Aquatex should be used on the plastered exterior/interior surface

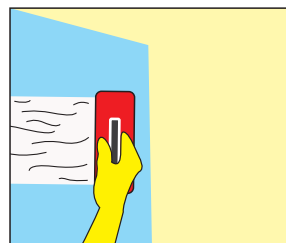
HOW TO USE: Pre-clean and pre-wet the surface. Mix Aquatex with water (not water to Aquatex) and mix with a stirrer till it forms a homogenous slurry/paste. Apply the paste on the plastered exterior/interior surface with mason's steel or plastic trowel. Allow the surface to dry for 5-10 mins. Apply in patches, uniformly over the surface. Using a plastic/fiber trowel, move uniformly on the surface to get the desired texture pattern.



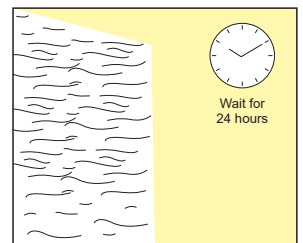
①



②



③



④

ADVANTAGES:

- Aquatex gives excellent adhesion/ bonding to all properly prepared wall.
- It is a flexible water resistant coating.
- It is aesthetic appeal and protection against water.
- It seals all hairline cracks on the wall and preventing seepage.
- Aqua Tex coating is abrasion, U.V. Light & fully fungus resistant.

PACKAGING:

25 kg HDPE bag.



Corporate Office:

601, Corporate Arena, Off. Aarey Pirkamal Cross Rd., Goregaon (W), Mumbai - 400104
Tel: 022-46038393 Email: info@aquaproofindia.com | Website: www.aquaproofindia.com



PUTAAITM

(Whitewash)

Aquaproof Putaai is a factory made pre-blended cement-lime powder with polymers, supplied in dry form.

It is pure white and used as a protective coating to improve the appearance of home. Compared to the cost of commercial paint, Aquaproof Putaai is extremely cheap.

WHERE TO USE: It can be used on interior and exterior masonry surfaces.

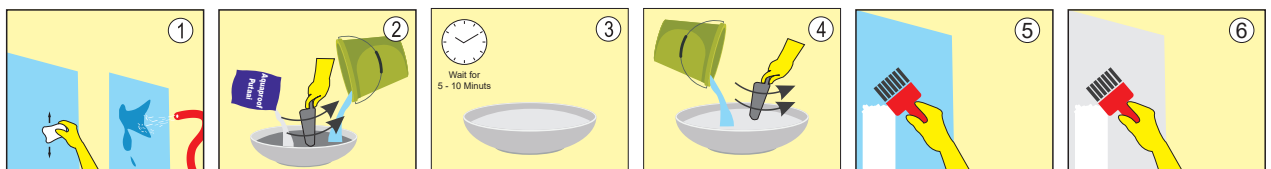
HOW TO USE:

A) SURFACE PREPARATION:

1. The surface to be painted should be free from oil, grease, dust and efflorescence. It should be cleaned by scrubbing or wire brushing. This is important for proper adhesion of Aquaproof Putaai to the surface.
2. After cleaning, the surface should be thoroughly wet with water. It should then be repeated 3 to 4 times depending on the absorption of the surface.
3. Add 2 parts of Aquaproof Putaai to 1 part of clean potable water. Stir and mix thoroughly to obtain a creamy consistency.
4. Wait for 5 to 10 minutes.
5. Dilute the mix further by adding an additional 1 part of water until the mix is of brushable consistency.

B) APPLICATION:

6. Apply one coat on the pre-wetted walls by brush.
7. After over-night drying apply second coat. Normally 2 to 3 coats are sufficient for a good finish.



ADVANTAGES:

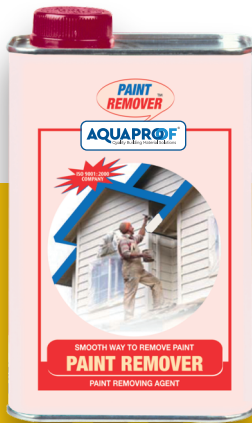
- It has strong adhesion/bonding to the prepared wall.
- It is easy to use.
- It is very cost effective.
- It gives a very shining whiteness.
- It provides a smooth finish to the walls.
- It gives very good results.

PACKAGING:

50 kg bag and 1 kg pouch.

**Corporate Office:**

601, Corporate Arena, Off. Aarey Piramal Cross Rd., Goregaon (W), Mumbai - 400104
Tel: 022-46038393 Email: info@aquaproofindia.com | Website: www.aquaproofindia.com



PAINT REMOVER™

(Strong Paint Remover)

Aquaproof Paint Remover is a single pack highly effective general purpose paint and varnish remover. It is formulated for interior and exterior use on painted surfaces. It is composed of selected solvent blend incorporated with suitable ingredients.

WHERE TO USE: It can be used on any old painted surfaces.

HOW TO APPLY: Apply a generous coating of Aquaproof Paint Remover with a soft brush. Allow time for penetration of Aquaproof Paint Remover in the paint film. Normally 10-15 minutes are enough but for two pack and stoving products, an interval of 30 minutes may be required. When the painted film will become a blistered or wrinkled in appearance, then strip off the softened film with scraper and wash with water. Where several coats exists then it may be necessary to repeat the process. After removal of old paint film, the surface should be thoroughly washed with water. Take care to clean the Paint Remover from any hidden area, edges, corners, nuts, bolts, mouldings, etc.

ADVANTAGES:

- It can be used to remove all kinds of paint coating.
- It is economical in use to remove paint.
- It is eco-friendly in use.
- It is easy to apply and you can do-it-yourself.

STORAGE: Store in normal & dry condition.

PRECAUTIONS: Avoid contact with the skin and eyes. Wear suitable protective equipments such as goggles, face mask and gloves. Ensure good ventilation during application. Do not breathe vapours or spray. It is flammable. Keep away from sources of ignition/fire.

SHELF LIFE:	PACKAGING:
1 year from the date of manufacture.	1Ltr can (12 cans in master carton).

**Corporate Office:**

601, Corporate Arena, Off. Aarey Piralal Cross Rd., Goregaon (W), Mumbai - 400104
Tel: 022-46038393 Email: info@aquaproofindia.com | Website: www.aquaproofindia.com