



## PUTAII™ (Whitewash)

**Aquaprof Putaai** is a factory made pre-blended cement-lime powder with polymers, supplied in dry form.

It is pure white and used as a protective coating to improve the appearance of home. Compared to the cost of commercial paint, Aquaprof Putaai is extremely cheap.

**WHERE TO USE:** It can be used on interior and exterior masonry surfaces.

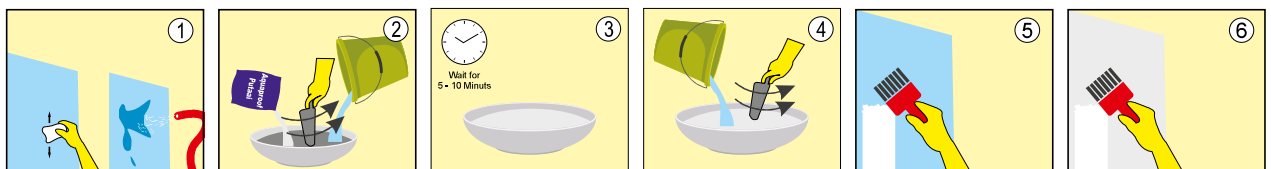
### HOW TO USE:

#### A) SURFACE PREPARATION:

1. The surface to be painted should be free from oil, grease, dust and efflorescence. It should be cleaned by scrubbing or wire brushing. This is important for proper adhesion of Aquaprof Putaai to the surface.
2. After cleaning, the surface should be thoroughly wet with water. It should then be repeated 3 to 4 times depending on the absorption of the surface.
3. Add 2 parts of Aquaprof Putaai to 1 part of clean potable water. Stir and mix thoroughly to obtain a creamy consistency.
4. Wait for 5 to 10 minutes.
5. Dilute the mix further by adding an additional 1 part of water until the mix is of brushable consistency.

#### B) APPLICATION:

6. Apply one coat on the pre-wetted walls by brush.
7. After over-night drying apply second coat. Normally 2 to 3 coats are sufficient for a good finish.



**ADVANTAGES:**

- It has strong adhesion/bonding to the prepared wall.
- It is easy to use.
- It is very cost effective.
- It gives a very shining whiteness.
- It provides a smooth finish to the walls.
- It gives very good results.

**PACKAGING:**

50 kg bag and 1 kg pouch.

**Corporate Office:**

601, Corporate Arena, Off. Aarey Piralal Cross Rd., Goregaon (W), Mumbai - 400104  
Tel: 022-46038393 Email: [info@aquaproofindia.com](mailto:info@aquaproofindia.com) | Website: [www.aquaproofindia.com](http://www.aquaproofindia.com)