

# GRAND ROYAL GOLD PUTTY

(High Quality White Cement & Imported Polymer Based Premium Quality Putty)



**Aquaprof Grand Royal Putty** is premium quality silk finish premix white cement based & polymer modified putty. It is a powder form, white cement-based putty. It is easy to apply and of excellent quality. It is to be applied before painting on the plastered wall/ceiling to level the surface. It gives a mirror look, silky finish and an excellent water-resistant finishing.

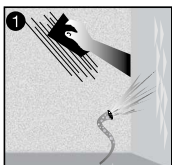
### WHERE TO USE:

Aquaprof Grand Royal Gold Putty is generally recommended as a surface leveler before painting. It is excellent for ceiling, interior and exterior portions of buildings, flats, bungalows, hospital and theater walls, educational institutes and laboratories, convention halls etc. As UV rays do not affect it, Aquaprof Grand Royal Gold Putty can be safely used on exterior facades of structures.

### HOW TO USE:

**(A) SURFACE PREPARATION:** Walls on which Aquaprof Grand Royal Gold Putty is to be applied should be thoroughly cleaned and made free from contaminants, which will affect adhesion. Neutralize the surface with sufficient quantity of water. Apply the prepared pasty slurry over the cleaned surface and allow it to dry for 6-8 hours. The other coat must be applied at right angles to the direction of the first coat.

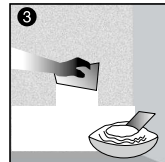
**(B) MIXING:** Aquaprof Grand Royal Gold Putty powder is to be mixed with 38-42% water by weight of powder. Take approx. half the quantity of required water in bucket. Add Aquaprof Grand Royal Gold Putty powder gradually and stir continuously with a flat blade or by a mechanical mixer. Add the remaining water gradually while mixing is complete, allow the mixture to stand for 10-15 minutes. Then remix and apply the material by a spatula or by a flat blade.



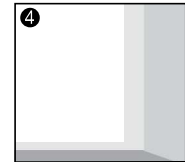
Before applying the coat, walls should be cleaned & free from grease, oil or dirt. Wet the Wall sufficiently with potable water.



Take approximately 40% of water by volume of Aquaprof Grand Royal Gold Putty till you get uniform paste.



Remix and apply 2 coats of Aquaprof Grand Royal Gold Putty by a trowel flat blade or any suitable tools.



12 hours after applying Aquaprof Grand Royal Gold Putty leave for dry naturally for 3 days before applying paint.

### 9 ADVANTAGES:

- Water curing is not required.
- It is durable and imparts excellent water resistant and waterproofing properties.
- It poses excellent bonding properties and hence can be applied on new as well as old surfaces as .
- It should be applied for up to 2mm thickness per coat, thus small holes, crevices can be levelled but it can be applied for maximum two coats only.
- It has excellent scratch and mark resistance.
- It allows the painter the unique abilities to take the "edges".
- It can be applied on concrete, cement plastered surface.
- It gives more coverage, hence it is economical.
- It is a do-it-yourself product and thus application is very simple and easy to use.

### COVERAGE:

A 40kg bag covers approximately 400-600 sq.ft. for a coating of 1mm thickness.

### SHELF LIFE:

For better results use within 6 months from the date of manufacturing.

### STORAGE:

Keep the material in a cool, dry place. Since it is cement based material, it should not be exposed to direct atmospheric conditions. A partially used pack should be stored in air tight conditions.

### PRECAUTIONS:

After completion of work, clean tools and vessels with water before material sets. Never apply more than 2mm at a time and do not apply more than 3mm thickness in any circumstances.

### PACKAGING:

1, 5kg pouches & 20, 40kg bags.