



AQUAPROF WALL CARE™ PREMIUM PUTTY

(White Cement & Imported Polymer Based Premium Quality Putty)

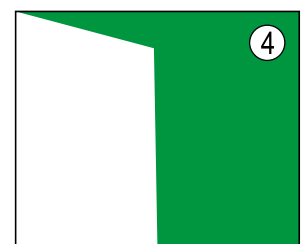
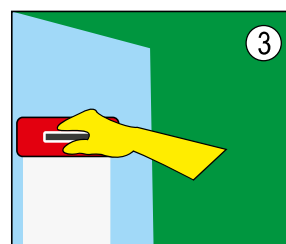
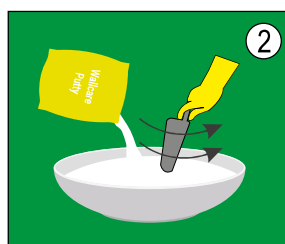
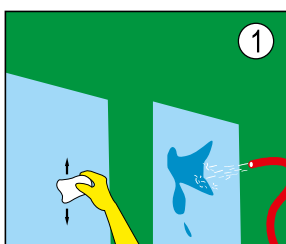
Aquaprof Wall Care Premium Putty is one of India's top class velvet finish premix white cement based & polymer modified putty manufactured by experts in the field. It is white cement-based putty in a powder form. It is easy to apply and very economical too. It is to be applied before painting on the plastered wall/ceiling to level the surface. It gives a smooth finish and an excellent water-resistant finishing.

WHERE TO USE: Aquaprof Wall Care Premium Putty is generally recommended as a surface leveler before painting. It is excellent for ceiling, interior and exterior portions of buildings, flats, bungalows, hospital and theater walls, educational institutes and laboratories, convention halls etc. Since UV rays do not affect it, Aquaprof Wall Care Premium Putty can be safely used on exterior facades of structures.

HOW TO USE:

(A) SURFACE PREPARATION: Walls on which Aquaprof Wall Care Premium Putty is to be applied should be cleaned and made free from contaminants, which will affect adhesion and should be pre-cleaned. Neutralize the surface with sufficient quantity of water. Apply the prepared pasty slurry over the cleaned surface and allow it to dry for 6-8 hours. The other coat must be applied at right angles to the direction of the first coat.

(B) MIXING: Aquaprof Wall Care Premium Putty powder is to be mixed with 38-42% water by weight of powder. Take approx. half the quantity of required water in bucket. Add Aquaprof Wall Care Premium Putty powder gradually and stir continuously with a flat blade or by a mechanical mixer. Add the remaining water gradually while mixing is complete, allow the mixture to stand for 10-15 minutes. Then remix and apply the material by a spatula or by a flat blade.



COVERAGE: A 40kg bag covers approximately 400-600 sq.ft. for a coating of 1 mm thickness.

ADVANTAGES:

- It does not require water curing.
- It is durable and imparts excellent water resistant and waterproofing properties.
- It can be applied on new as well as old surfaces as it poses excellent bonding properties.
- It should be applied for up to 2mm thickness per coat, thus small holes, crevices can be levelled but it can be applied for maximum two coats only.
- It has excellent scratch and mark resistance.
- It allows the painter the unique abilities to take the "edges".
- It can be applied on concrete, cement plastered surface.
- It gives more coverage, hence it is economical.
- It is a do-it-yourself product and thus application is very simple and easy to use.

STORAGE: Keep the material in a cool, dry place. Since it is cement based material, it should not be exposed to direct atmospheric conditions. A partially used pack should be stored in air tight conditions.

PRECAUTION: After completion of work, clean tools and vessels with water before material sets. Never apply more than 2mm at a time and do not apply more than 3mm thickness in any circumstances.

SHELF LIFE:	PACKAGING:
For better results use within 6 months from the date of manufacturing.	1, 5kg pouches & 20, 40kg bags.

Corporate Office:

601, Corporate Arena, Off. Aarey Piralal Cross Rd., Goregaon (W), Mumbai - 400104
Tel: 022-46038393 Email: info@aquaproofindia.com | Website: www.aquaproofindia.com