



## AQUA SCREED™

(Bedding Mortar)

**Aqua Screed** is a single component cementitious high strength bedding mortar. It is ready to use dry powder for application on existing substrate before the installation of tile and stone. It is a blend of Portland cements, powder additives and graded aggregates. It requires only the addition of clean water on site.

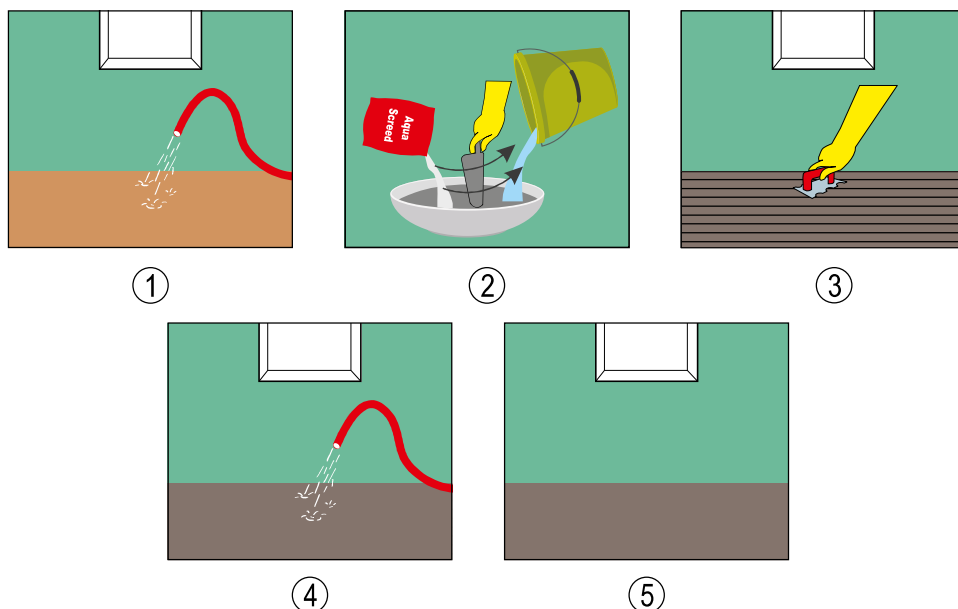
**WHERE TO USE:** For used in both residential and commercial in dry and wet areas.

### HOW TO USE:

**(A) SURFACE PREPARATION:** Ensure that substrate is free from oil, paint and other contaminants that may reduce or prevent proper adhesion. Also ensure that there is absolutely no free water prior to bedding in.

**(B) MIXING:** Aqua Screed can be mixed by hand or by mortar mixer machine. Mix 40 kg bag with 4.5 to 5 litre of clean water.

**(C) APPLICATION:** Place the Aqua Screed within 20 minutes of mixing in order to maintain workability. Aqua Screed should be applied by trowel. Use a dampened steel trowel to finish. On completion of the application, entire area should be thoroughly cured with water.



**ADVANTAGES:**

- Easy to use
- Pre blended
- High strength
- Low wastage
- Better finish
- Requires only water addition

**STORAGE:** Keep the material in a cool and dry place. Since it is cement based material, Aqua Screed should not be exposed to direct atmospheric conditions. A partially used bag should be stored in airtight conditions.

**SHELF LIFE:**

For better result use within 12 months from the mfg date.

**PACKAGING:**

40kg bag.

**Corporate Office:**

601, Corporate Arena, Off. Aarey Piralal Cross Rd., Goregaon (W), Mumbai - 400104  
Tel: 022-46038393 Email: | info@aquaproofindia.com | Website: www.aquaproofindia.com